

SmoothTool

Smooth
Robotics

Increased Welding Productivity
Effortless No-Code Programming
Extensive Integration Options
Consistent Quality of Welds



Made for Welders, Built for Efficiency.

SmoothTool is a cobot welding package for Universal Robots.

It consists of:

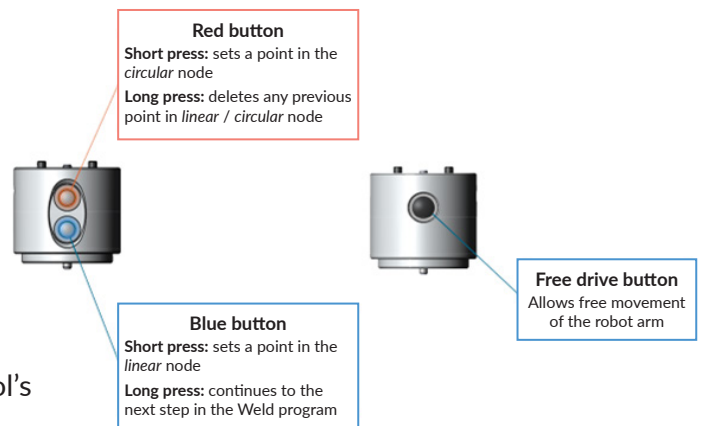
1. The SmoothTool software (URCap)
2. The programming flange

SmoothTool is the welder's secret weapon for increased productivity. This intuitive software makes creating and executing advanced welds effortless, freeing you to focus on what matters most - laying down perfect welds.

Say goodbye to tedious programming. SmoothTool's user-friendly interface lets you quickly program intricate welds with features like Touch Sense, Weaving Patterns, Multipass, and more. Boost your output without sacrificing precision.

Maximum flexibility for any workshop. SmoothTool works seamlessly with all UR robots (separate hardware for UR20) and comes with a programming flange that is used to Freedrive the robot and teach the welding path.

The software comes with a list of pre-integrated power sources that enable advanced features, but SmoothTool can be integrated with virtually any kind of welding power source, thanks to the optional RetroFit Kit by Smooth Robotics.



What's in the box?

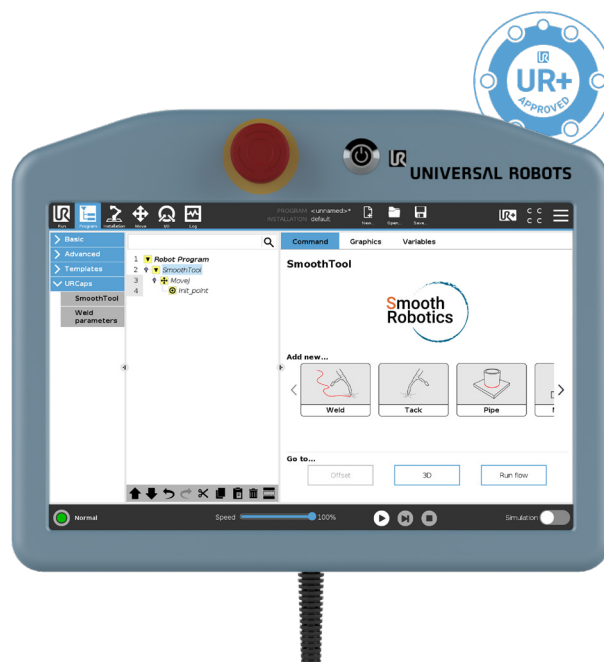
- Software USB key (URCap & user manual)
- Programming flange
- License USB dongle
- Installation guide
- Sticker
- 2 x guide pins

Product box dimensions: 170 x 110 x 80mm









License type

Choose from two license types:

1. Lifetime license
2. Subscription license with yearly renewal



SmoothTool Features

- | | | | |
|---|---------------------|---|---|
|  | Weaving | - | Add weaving patterns to both linear and circular paths |
|  | Tacking | - | For precise and consistent tacking |
|  | Angle System | - | Simply type in the desired work- and travel angles |
|  | Offset | - | Copy and offset welds in X, Y, and Z direction and any rotation |
|  | Touch Sense | - | Locate the precise position of your welding piece and adjust the path |
|  | Multipass | - | Easily create a weld consisting of multiple passes |
|  | Stitching | - | Control your stitch weld with custom parameters |
|  | 3D Universe | - | Visualize and touch up your welding program in 3D |

Flange Technical Data

Material	-	Anodized aluminium
Weight	-	520 gram
Total Height	-	66,50 mm
Diameter	-	74 mm
Buttons	-	1 x freedrive, 2 x programming
Cable length	-	140 mm
Cable type	-	PUR 8 x 0,14
Connection	-	SAC-8P M8 female

